



Easy Chess Puzzle # 0027

By

G Bud Games
<https://gbud.in>

September 30, 2021

Contents

1	Easy Chess puzzle # 0027 - Avoid stale mate	3
1.1	Easy chess puzzle 0027	4
1.2	Solution to easy chess puzzle 0027	4
1.2.1	Solution 1	5
1.2.2	Solution 2	6
1.2.3	Right moves for the solution to the easy chess puzzle 0027	8
1.2.4	Explanation for the moves	8
1.3	Categories of easy chess puzzle 0027	9
1.4	How to view the solution to easy chess puzzle 0027	9
1.5	How to get help for moves in the easy chess puzzle 0027	10
1.6	Play chess for free	11

List of Figures

1.1	Solve this easy chess puzzle 0027. Avoid stale mate @ https://gbud.in/gxvxp01	4
1.2	Solve this chess puzzle online with solution @ https://gbud.in/gxvxp01	4
1.3	Initial board position of easy chess puzzle 0027	5
1.4	Rb7 - Earlier your rook pinned the knight to the king. Now it is free to move. This will avoid stalemate. Stalemate is a condition in which the opponent does not have any legal moves	6
1.5	Initial board position of easy chess puzzle 0027	7
1.6	Rxg8+ - This sacrifice will avoid stalemate as the king can move in the eighth rank. Stalemate is a condition in which the opponent does not have any legal moves. You can promote the pawn to a queen and win this game later.	8
1.7	Click the solution button to view solutions @ https://gbud.in/gxvxp01	9
1.8	Click the help button to get help on next move @ https://gbud.in/gxvxp01	10
1.9	Solve more easy puzzles @ https://gbud.in/chsezpz	10
1.10	Solve other puzzles @ https://gbud.in/chsgppz	11
1.11	Play chess online for free. Solve puzzles and play with friends	11
1.12	Solve this puzzle online by scanning this QR code or go to the link below	12

Chapter 1

Easy Chess puzzle # 0027 - Avoid stale mate

Solve this easy chess puzzle and improve your chess games through improvement of your chess strategies and chess tactics.

Puzzle No : 0027

Difficulty level : Easy

Description : Avoid stale mate

Next Move : White

Player level : Beginner

Short URL for puzzle : <https://gbud.in/gxvxp01>

1.1 Easy chess puzzle 0027

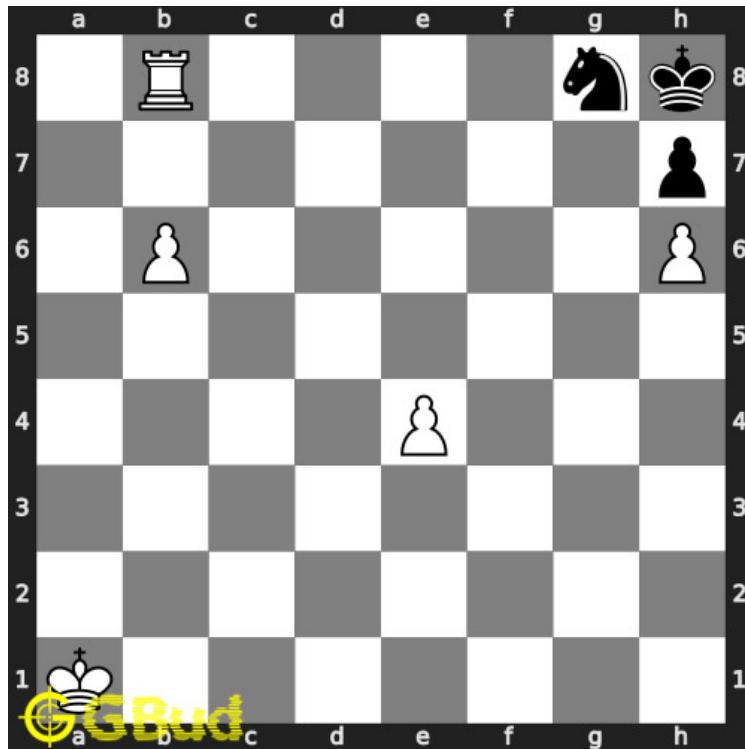


Figure 1.1: Solve this easy chess puzzle 0027. Avoid stale mate @ <https://gbud.in/gxvxp01>



Figure 1.2: Solve this chess puzzle online with solution @ <https://gbud.in/gxvxp01>

1.2 Solution to easy chess puzzle 0027

At this puzzle, next **move** is by **White**. The objective of the puzzle is to avoid stale mate.

See the interactive solution at the [puzzle page](#)

1.2.1 Solution 1

1.2.1.1 Initial board position

This is the initial board position of easy chess puzzle 0027.

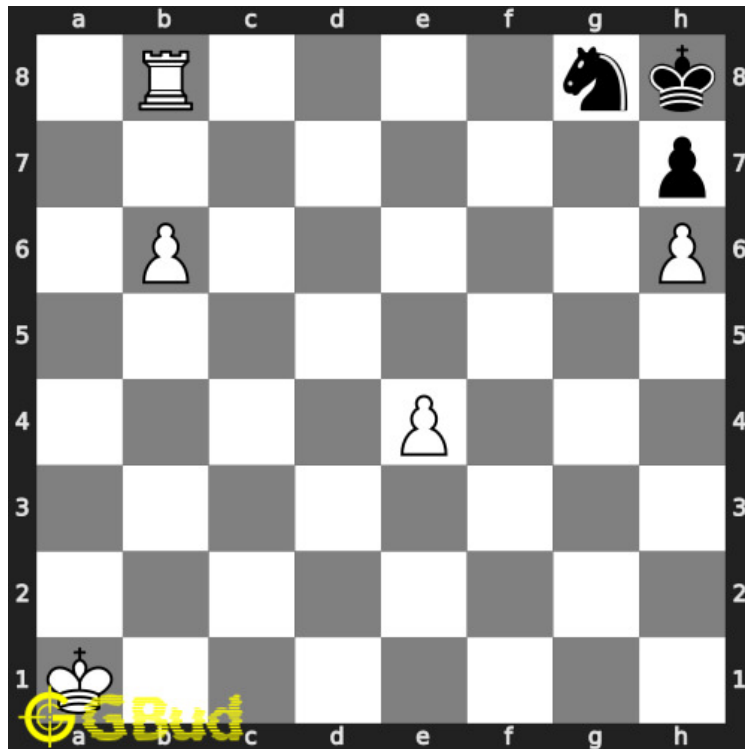


Figure 1.3: Initial board position of easy chess puzzle 0027

1.2.1.2 Move 1

Move by white

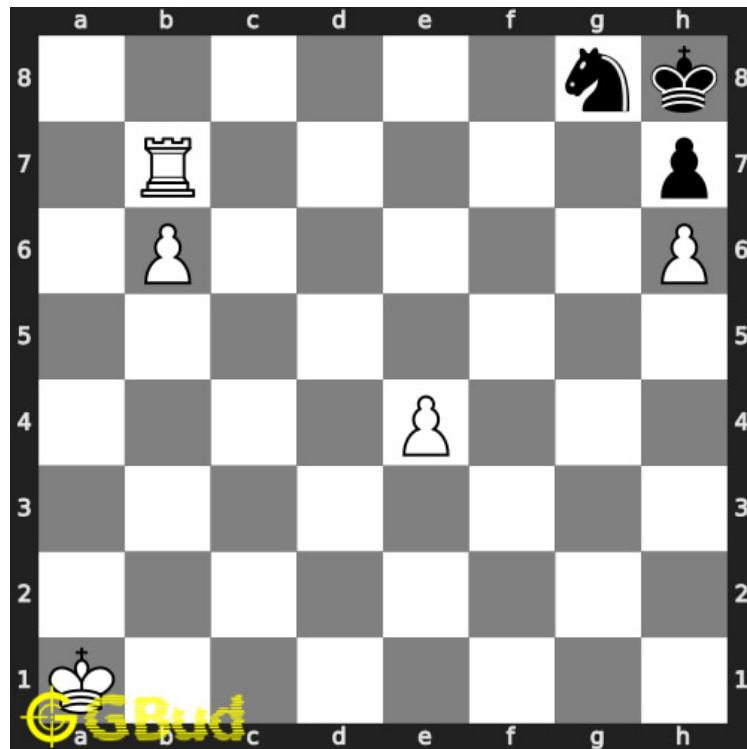


Figure 1.4: Rb7 - Earlier your rook pinned the knight to the king. Now it is free to move. This will avoid stalemate. Stalemate is a condition in which the opponent does not have any legal moves

1.2.2 Solution 2

1.2.2.1 Initial board position

This is the initial board position of easy chess puzzle 0027.

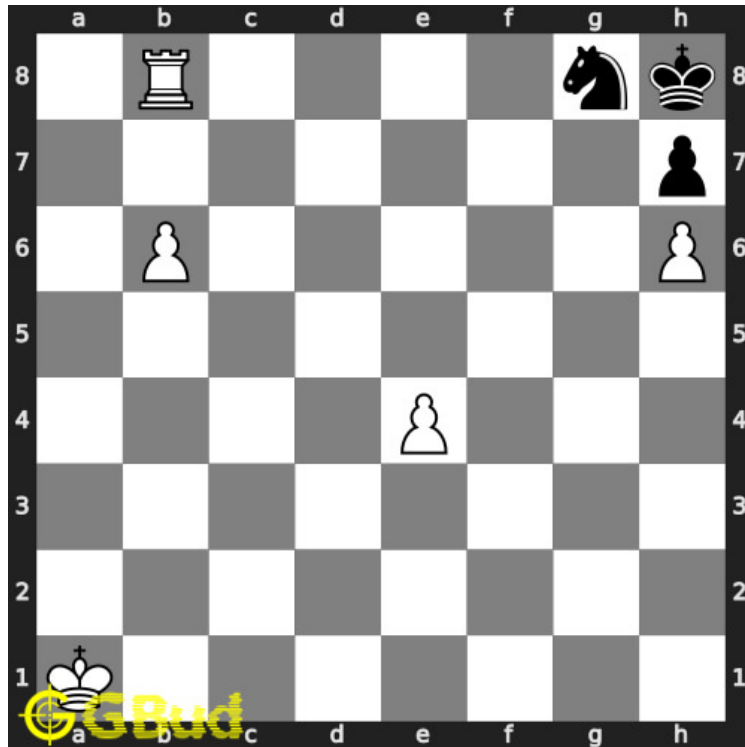


Figure 1.5: Initial board position of easy chess puzzle 0027

1.2.2.2 Move 1

Move by white

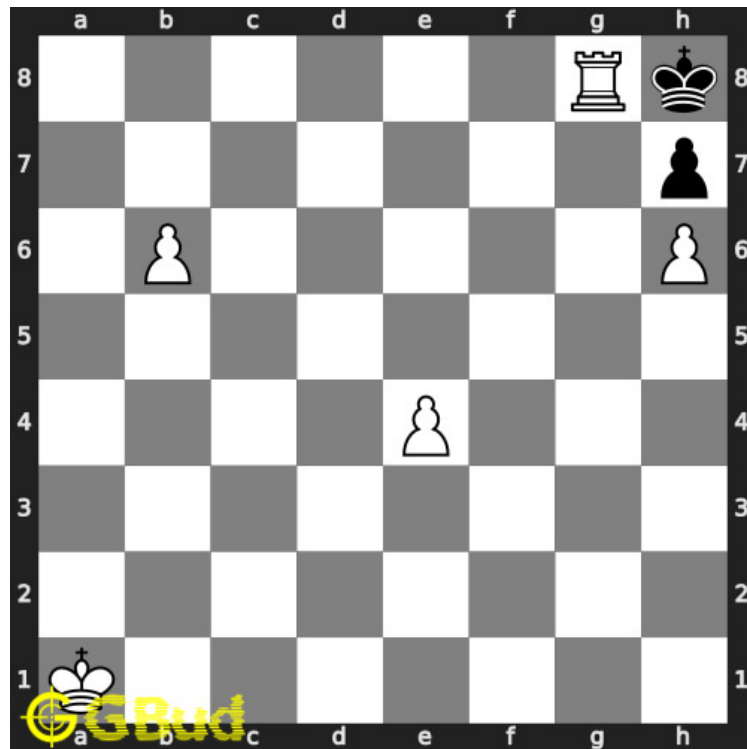


Figure 1.6: R_{xg8+} - This sacrifice will avoid stalemate as the king can move in the eighth rank. Stalemate is a condition in which the opponent does not have any legal moves. You can promote the pawn to a queen and win this game later.

1.2.3 Right moves for the solution to the easy chess puzzle 0027

Based on the objective of the puzzle, you have to make the right moves. Following are the right moves

1. R_{b7}
2. R_{xg8+}

1.2.4 Explanation for the moves

1. R_{b7} - Earlier your rook pinned the knight to the king. Now it is free to move. This will avoid stalemate. Stalemate is a condition in which the opponent does not have any legal moves
2. R_{xg8+} - This sacrifice will avoid stalemate as the king can move in the eighth rank. Stalemate is a condition in which the opponent does not have any legal moves. You can promote the pawn to a queen and win this game later.

3. For right move - You know how to avoid a stalemate. You have a better chance to win this game
4. For wrong move - You could have won this game later. But it ended up as a draw. It is a loss for you which is avoidable.

1.3 Categories of easy chess puzzle 0027

This easy chess puzzle falls in these categories.

1. [Easy chess puzzles](#)
2. [Sacrifice puzzles in chess](#)
3. [Endgame puzzles in chess](#)

1.4 How to view the solution to easy chess puzzle 0027

To view the [solution to this puzzle](#), follow the steps given below

1. Go to the [puzzle page](#)
2. Click the solution button (Key as shown [below](#)) to view the solution

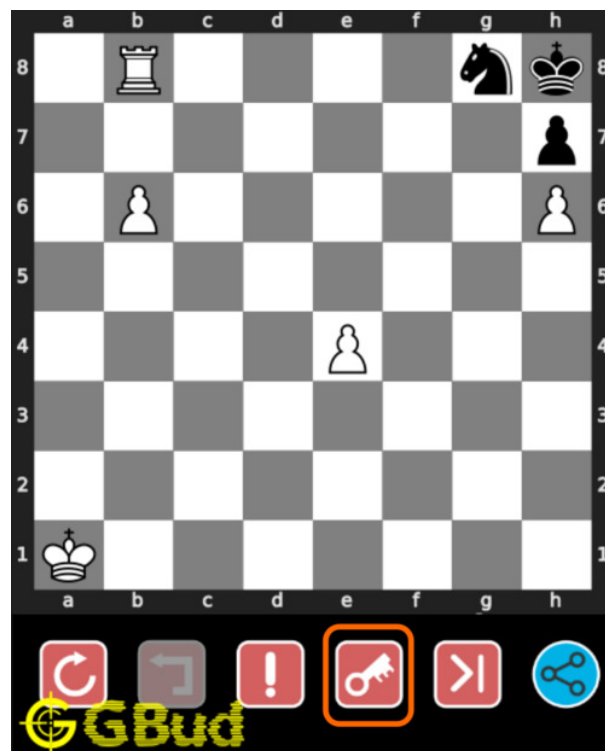


Figure 1.7: Click the solution button to view solutions @ <https://gbud.in/gxvxp01>

1.5 How to get help for moves in the easy chess puzzle 0027

To get help or the possible next moves in the puzzle, , follow the steps given below

1. Go to the [puzzle page](#)
2. Click the help button (exclamation mark as shown [below](#)) to get help or suggestion on next possible [move](#)

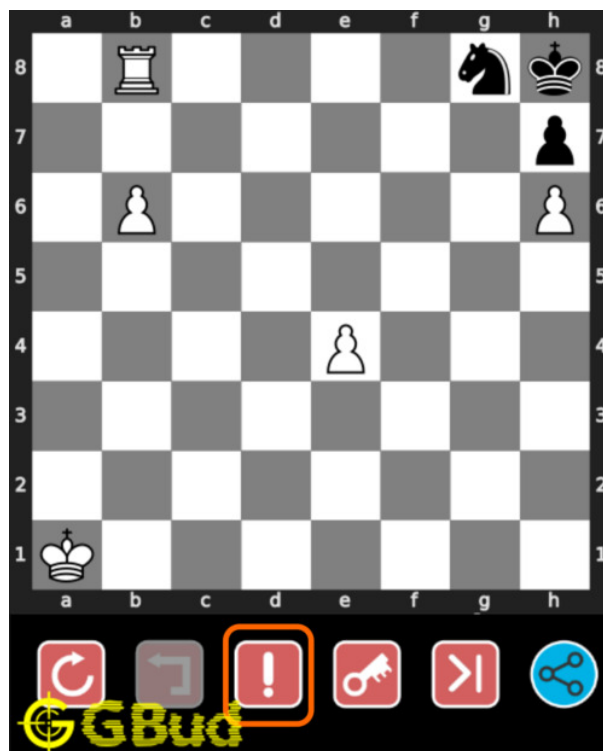


Figure 1.8: Click the help button to get help on next move @ <https://gbud.in/gxvxp01>



Figure 1.9: Solve more easy puzzles @ <https://gbud.in/chsezpz>



Figure 1.10: Solve other puzzles @ <https://gbud.in/chsgppz>

1.6 Play chess for free

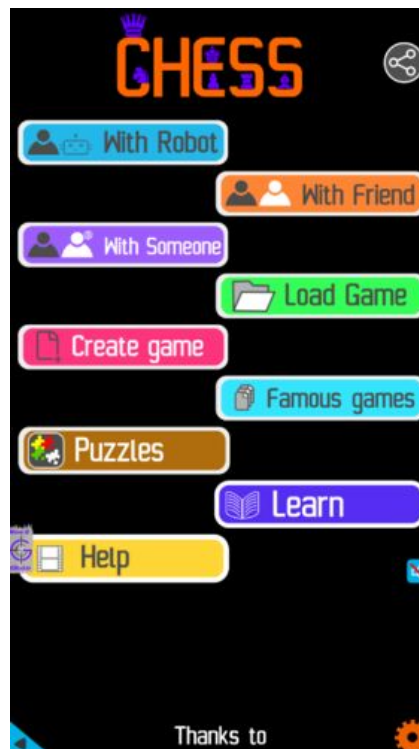


Figure 1.11: Play chess online for free. Solve puzzles and play with friends

Play chess for free at <https://gbud.in/chs>

We present you a platform to play chess online with friends for free. No need to install any app. You can play chess for free without registration or login.

Simple. You can do several chess related activities.

1. [solve chess puzzles](#)
2. [learn about chess](#)

3. [play chess with computer](#)
4. [play chess with friend](#)
5. [create your own chess games](#)
6. [fen viewer](#)
7. [fen editor](#)
8. [fen generator](#)
9. [pgn viewer](#)
10. [chess board editor](#)
11. [view famous chess games.](#)



Figure 1.12: Solve this puzzle online by scanning this QR code or go to the link below

<https://gbud.in/gxvxp01>

Read the latest article on Easy Chess puzzle # 0027 - Avoid stale mate by scanning this QR code or click the link

Previous article : « [Easy Chess puzzle # 0026 - Mate in 2 moves](#)

Next article : [Easy Chess puzzle # 0028 - Unpin your queen](#) »

Access the latest version of this article at
<https://gbud.in/blog/game/chess/easy-chess-puzzles/easy-chess-puzzle-0027.html>

[Back to top](#)

[Contact Us](#)

© GBud Games 2021